

FIT-OUT BROCHURE

SERENITY VILLAS



# SERENITY VILLAS

by GRUPO TURIS PROMOCIONES

## A MEDITERRANEAN RETREAT IN LA FUSTERA

Located in the heart of the Northern Costa Blanca, in the exclusive area of La Fustera, Benissa Costa, Fanadix Residential is a collection of four single-family homes that blend the charm of Ibiza style with the elegance and comfort of Mediterranean architecture.

### DESIGN & STYLE

Inspired by the bright and pristine aesthetics of Ibiza, these homes have been carefully designed to harmonize with their surroundings. Clean lines, cubic volumes, and natural materials such as wood and stone combine to create warm and timeless spaces. The lush vegetation surrounding the plots enhances the sense of privacy and well-being, turning each home into a tranquil oasis.

### COMFORT & QUALITY

Each home is designed to offer an exceptional living experience. Open and functional spaces maximize natural light, fostering a seamless connection between indoor and outdoor areas. High-quality finishes and materials ensure a sophisticated and durable atmosphere, with meticulous attention to detail in every room.

### PRIVILEGED LOCATION

Fanadix Residential enjoys a strategic location, just 10 minutes from Calpe, Moraira, and Benissa, providing access to all the services and amenities of the area. Additionally, La Fustera beach is just 1 kilometer away, offering immediate access to one of the most beautiful Mediterranean spots.

### AN EXCEPTIONAL NATURAL ENVIRONMENT

Surrounded by nature and in a low-density area, this exclusive residential development offers a serene and relaxed atmosphere. While the homes do not have sea views, each plot is carefully designed to ensure privacy and allow residents to enjoy a lush, green environment.

### THE PERFECT CHOICE

If you are looking for a home where architecture, design, and nature merge in perfect harmony, Fanadix Residential is the ideal choice. A contemporary retreat that captures the essence of the Mediterranean and offers an unparalleled quality of life.









FIT-OUT BROCHURE  
**SERENITY VILLAS**









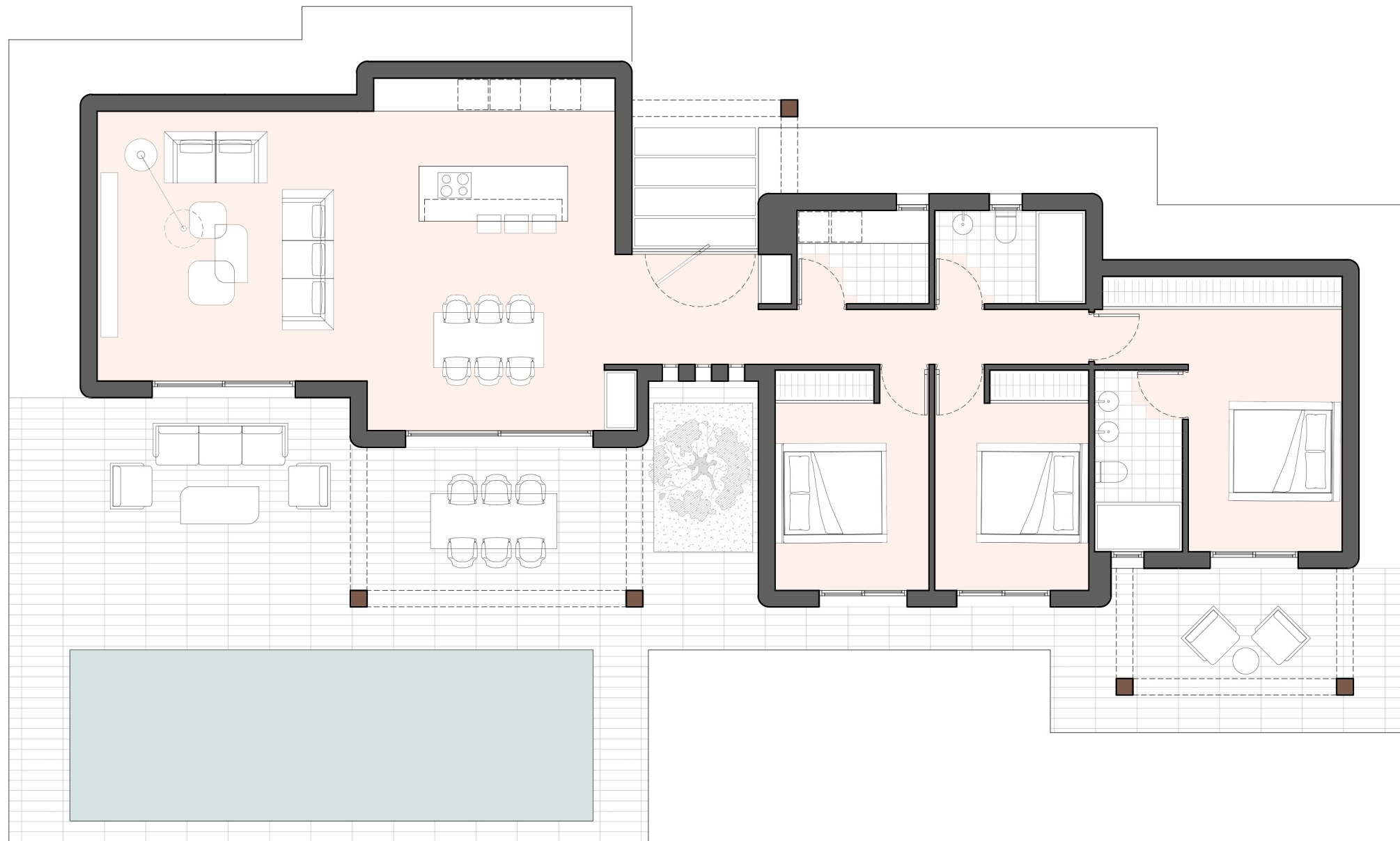












Superficies	Construidas
PLANTA BAJA	
VIVIENDA	139.61m2
PERGOLAS MADERA	33.76m2
TERRAZA	68.54m2
PISCINA	29.50m2